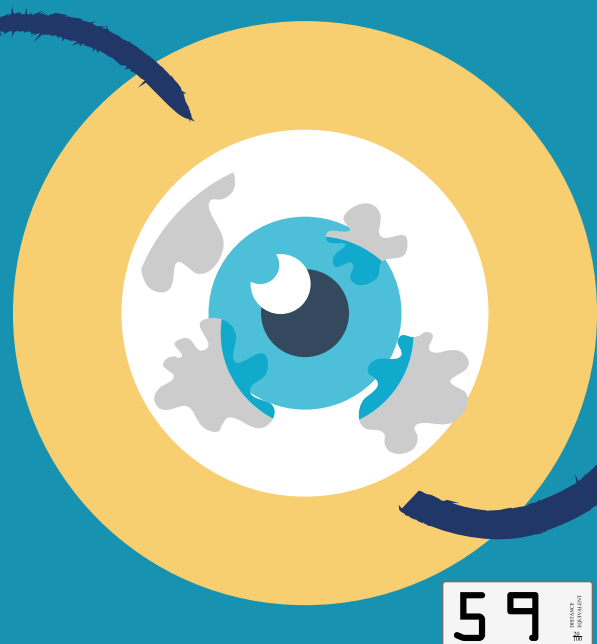


LASIK VS CONTACT SAFETY

The risk of an eye infection called bacterial keratitis was 1 in 100 for people who daily wore contacts for 30 years. **One (1) in 2000 people** lost some vision because of the infection.



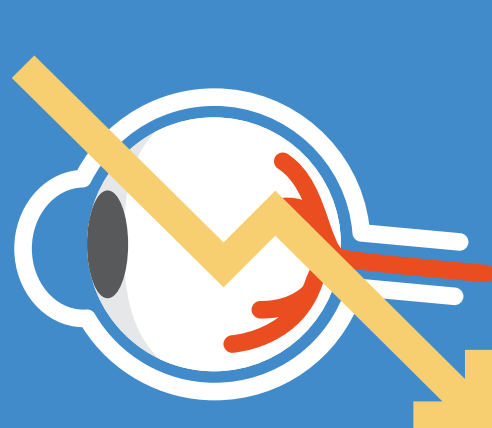
The risk of another disease that sometimes affects contact lens wearers, Acanthamoeba keratitis, was about **1 in 1000 for people** who wore daily wear contacts for 30 years.

Even though contacts that let more oxygen reach the eyes keep them healthier, new ways of doing **LASIK are safer and better at correcting vision.**



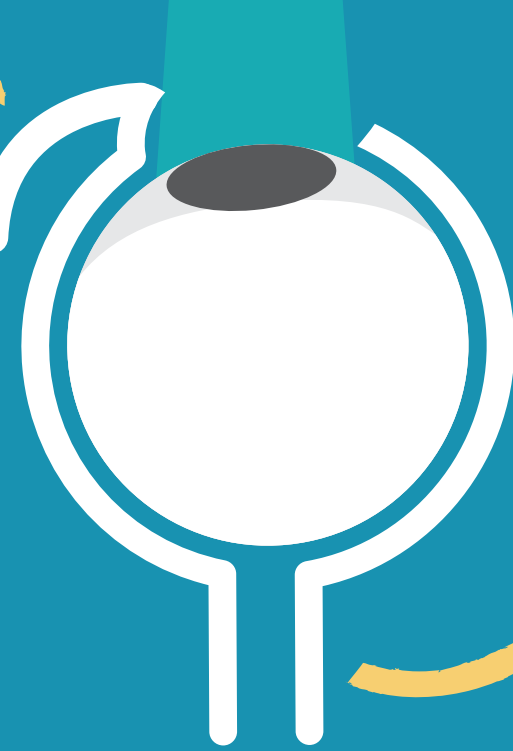
BASED ON THE INFORMATION ABOVE, CONTACT LENSES ARE NOT ALWAYS A SAFER ALTERNATIVE TO LASIK SURGERY.

Studies show that contact lens wearers are 10 times more likely to experience significant vision **loss or blindness** from wearing contact lenses than from having LASIK eye surgery.



When LASIK surgery is performed by an experienced surgeon in a facility with **excellent equipment** and a careful screening process that ensures good candidacy, the rate of **success is very high.**

Even though there is a small chance that LASIK surgery could **cause complications** such as an infection, these risks are far less likely than those associated with contact lens wear.



Laser eye surgery is a relatively less **risky option** than a lifetime of wearing contact lenses, according to several studies.

According to **Oregon Health and Science University researchers**, the risk for vision loss with refractive surgery may be lower compared to that of lifetime contact lens use.



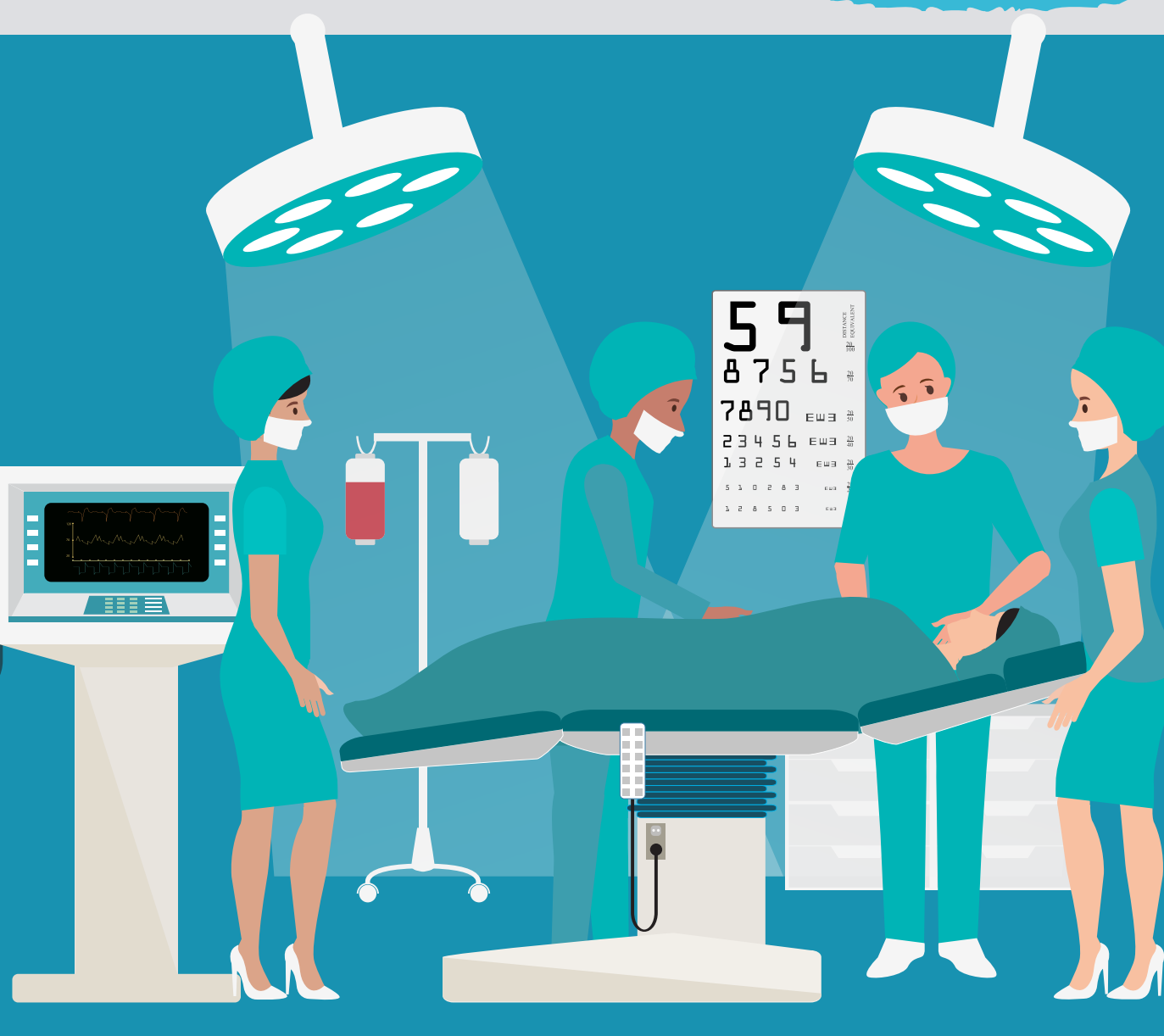
The risk of vision loss was highest in patients who wore extended contact lenses **(while sleeping).**

By design, contacts are foreign objects, requiring **physical finger touching** to make contact with the eye. This can introduce the likelihood of an infection typically not associated with LASIK.

LASIK is a relatively less risky vision correction procedure and safer than ever today; largely due to technology advances like **all blade-free laser surgery, faster**, more accurate lasers, more skilled surgeons, improved patient screening and other related factors.



Just to quickly reiterate – contact lens wearers incur a **1 in 1000 risk** of significant loss of vision just from bacterial or parasitic infections.



This is more than **10 times** higher the risk of significant loss of vision from LASIK by an experienced surgeon in a facility with excellent equipment and a careful screening consultation and process which ensures good candidacy.

Long or short term contact lens use can cause serious and permanent **vision damage**. In severe cases, it can even cause blindness.

Among those regularly using contact lenses, vision-threatening infections occur at a rate of **1 in 2,000**, whereas only **1 in 10,000 LASIK recipients experience complications.**



LASIK is an investment in your vision, and is more **cost effective** than a lifetime of contact lens wear. The average contact lens wearer will spend **tens of thousands of dollars** in their lifetime on contacts.

References

- <http://www.ohsu.edu/xd/health/services/casey-eye/clinical-services/laser-vision-correction/lasikvscon tacts.cfm>
- <http://archophth.jamanetwork.com/article.aspx?articleid=418674>
- <https://www.piedmonteye.com/wearing-contact-lenses-vs-lasik-eye-surgery-costs-benefits-risks/>
- <http://www.ohsu.edu/xd/health/services/casey-eye/clinical-services/laser-vision-correction/lasikvscon tacts.cfm>
- <https://www.lasik.com/articles/is-laser-eye-surgery-safer-than-contacts-what-you-should-know/>
- <https://www.doctorambati.com/blog/detail/2015/05/30/lasik-vs-contact-lenses-costs-and-risks-of-eac h.html>
- <http://archophth.jamanetwork.com/article.aspx?articleid=418674>
- <http://www.eyecenternoco.com/lasik-vs-contacts/>



LASERCARE
EYE CENTER

www.dfweyes.com